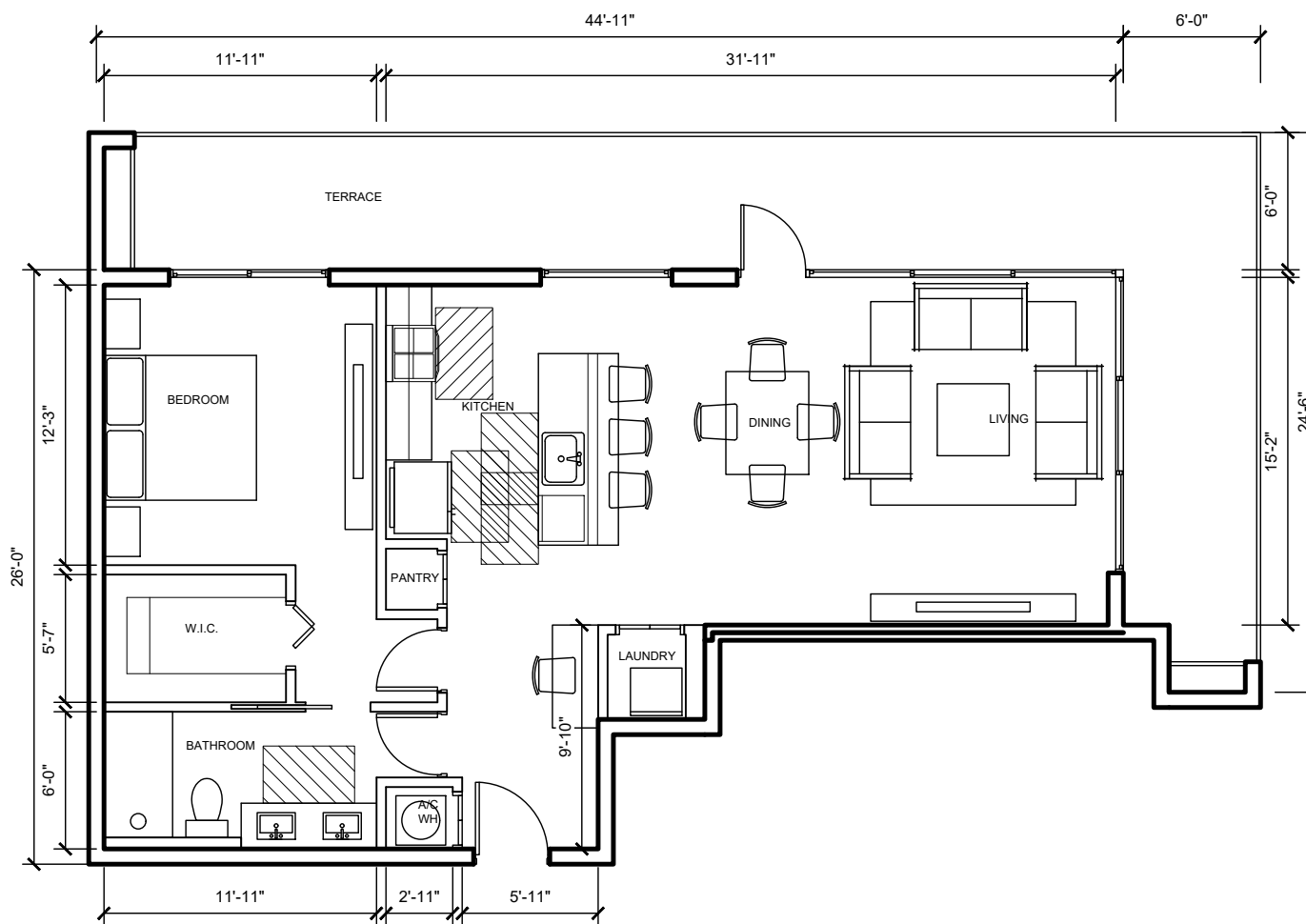
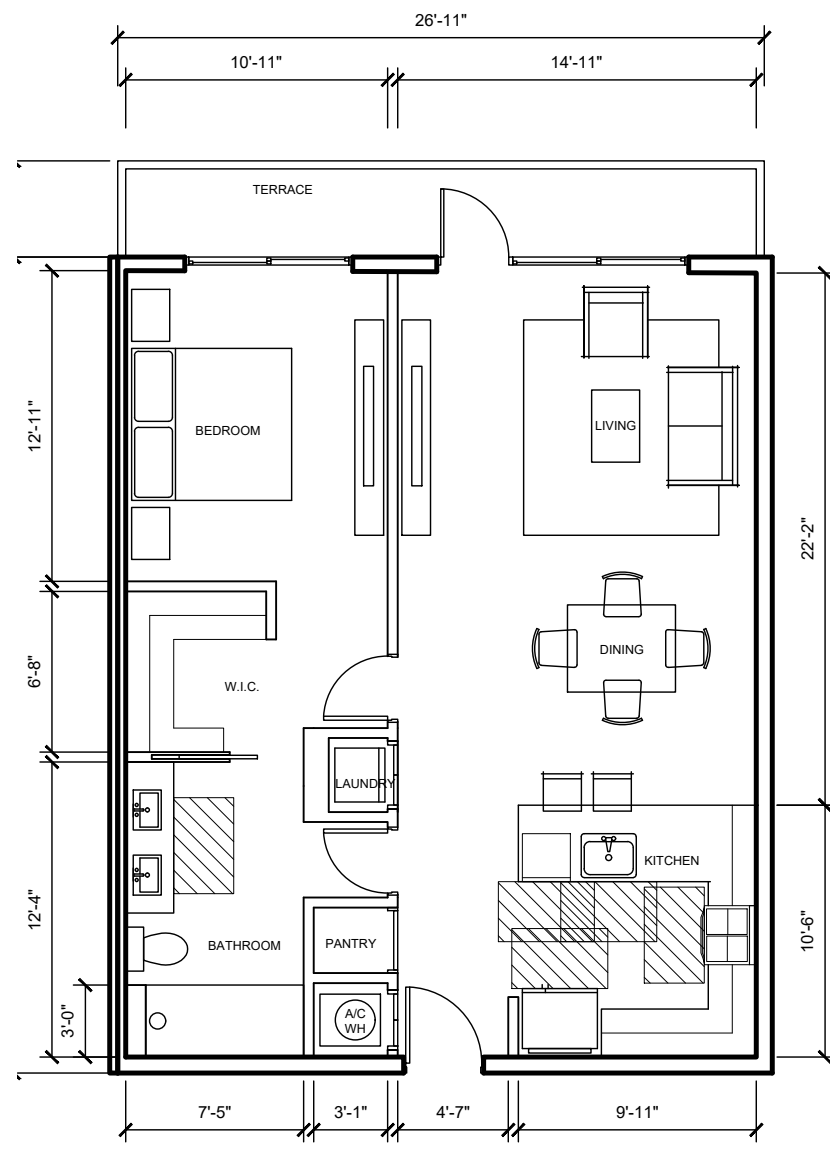


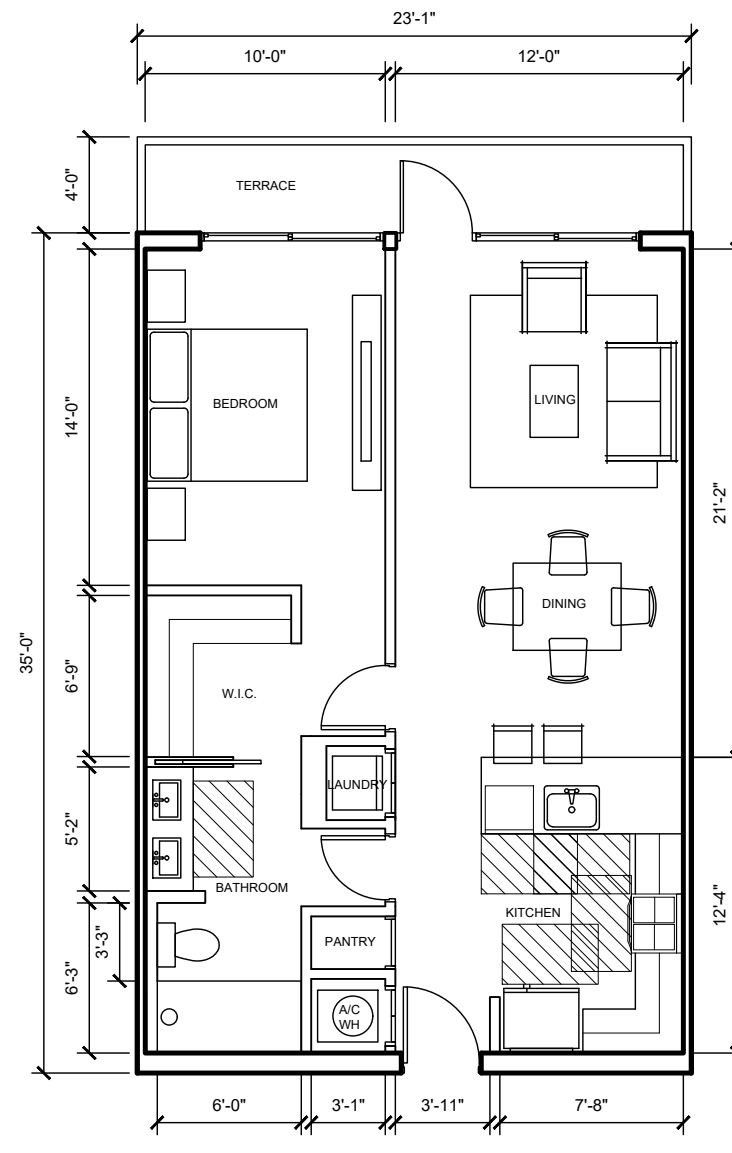
I BR + DEN TYPE A (8 UNITS)  
902 SF



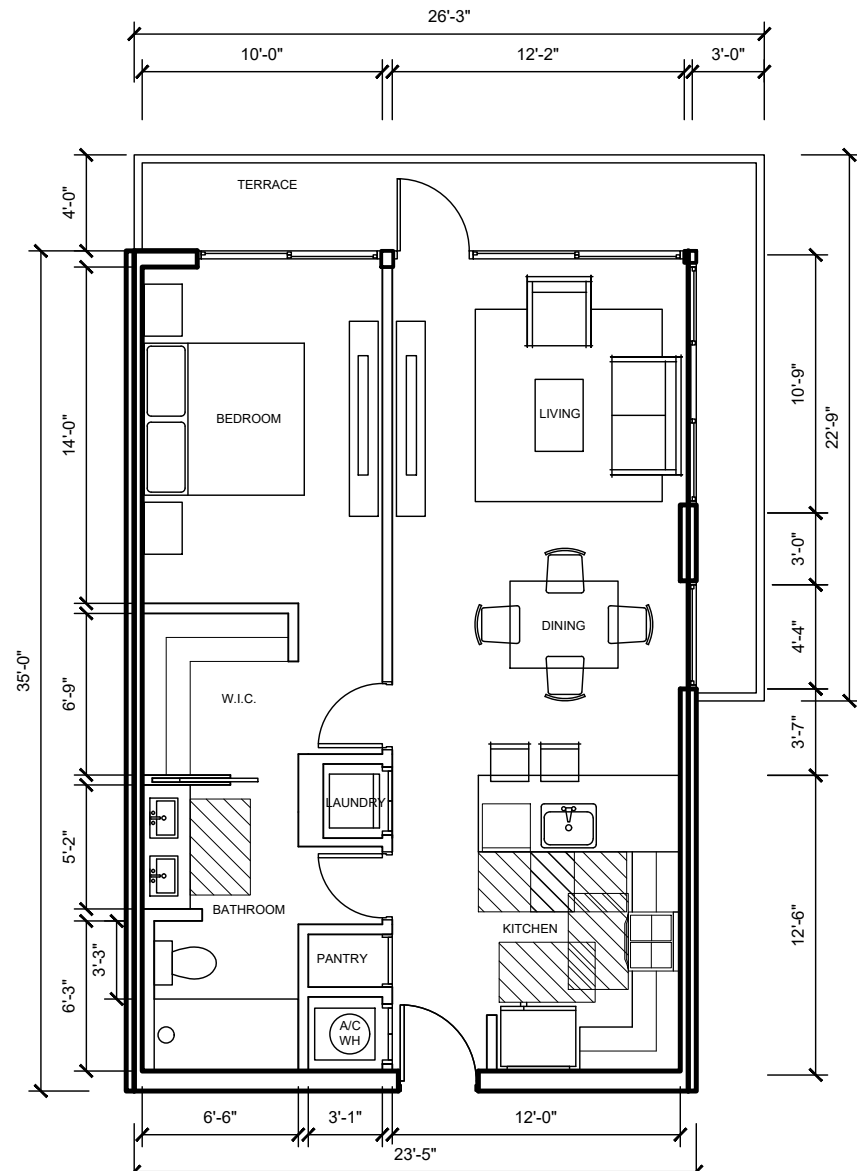
I BR TYPE A (5 UNITS)  
950 SF



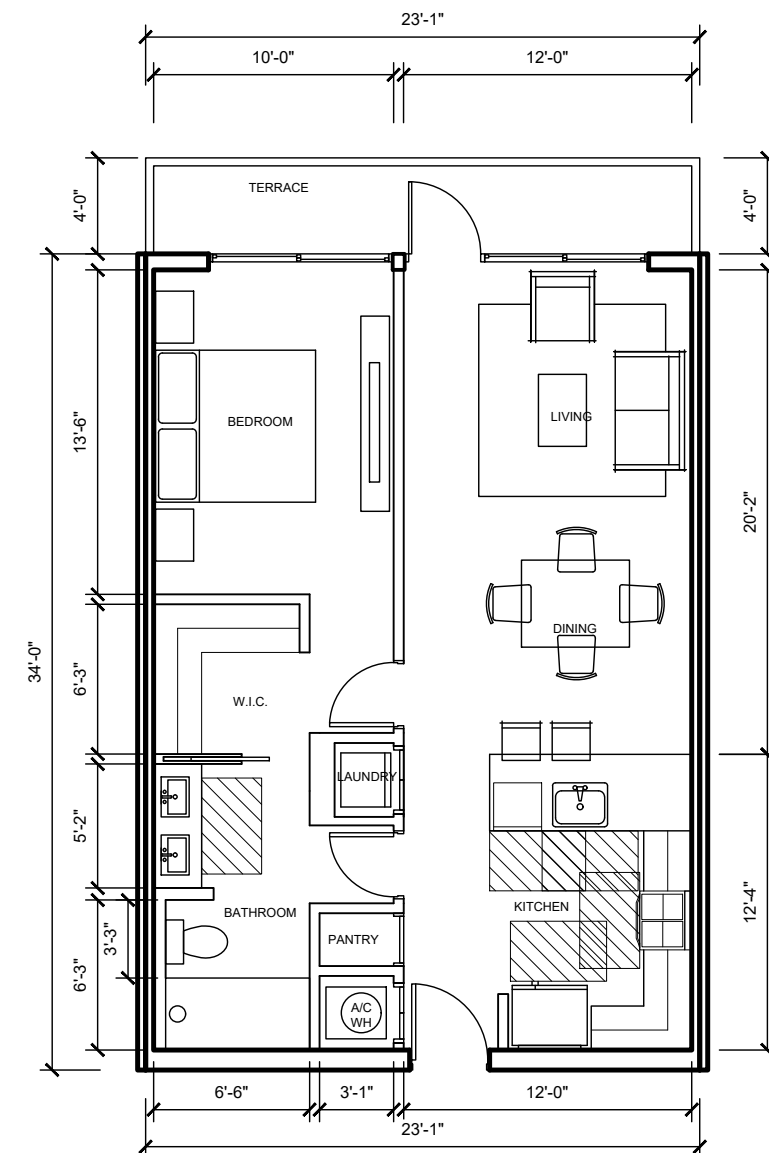
I BR TYPE B (6 UNITS)  
918 SF



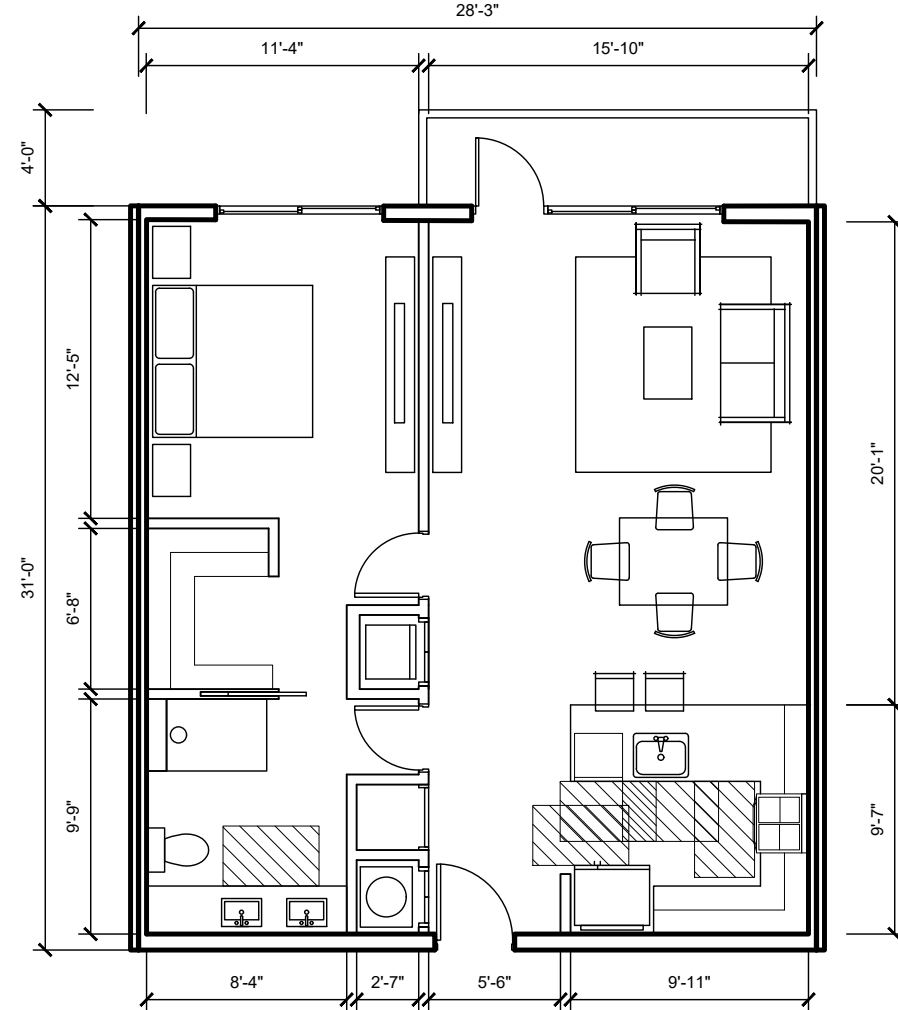
I BR TYPE C (10 UNITS)  
798 SF



I BR TYPE D (10 UNITS)  
810 SF



I BR TYPE E (10 UNITS)  
777 SF



I BR TYPE F (6 UNITS)  
866 SF